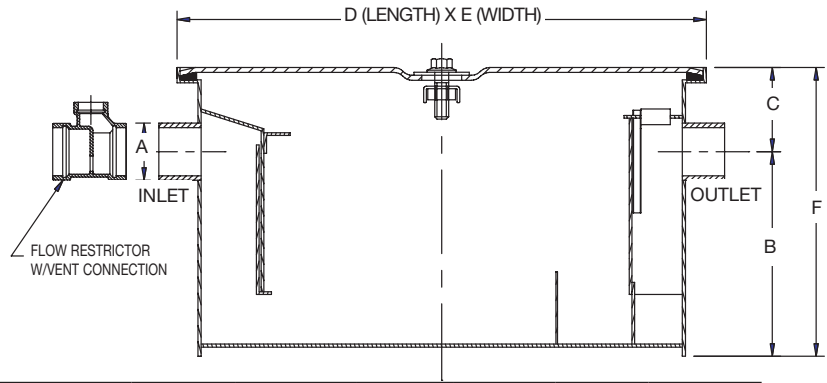


Grease Interceptors

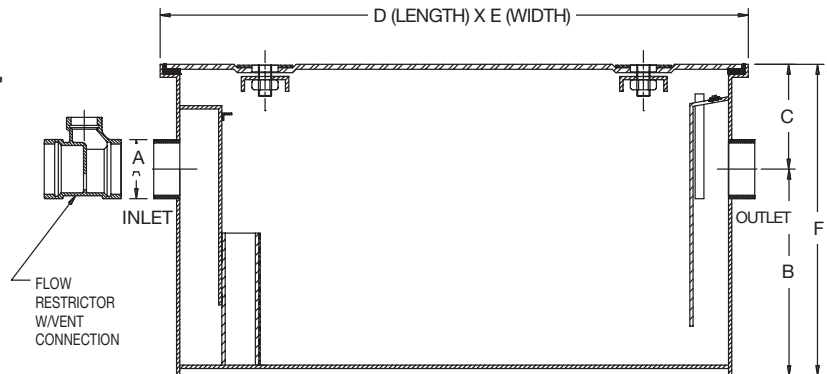
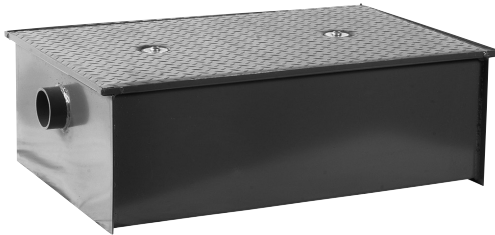
WD Series PDI Certified Grease Interceptor



Interceptor Model Number	List Price A.R.E.	-HD 10,000 Lbs. (Traffic Cover) Add	Flow Rate GPM	Grease Capacity Lbs.	A Inlet & Outlet	B Base to Center	C Top to Center	D Length	E Width	F Height	Weight Lbs.
WD-4	\$2,187.00	\$5,294.50	04	08	2"	7-3/4"	3-1/4"	16"	10"	11"	37.48
WD-7	3,039.50	5,599.00	07	14	2"	8-1/2"	3-1/2"	18"	13"	12"	54.01
WD-10	3,571.00	6,223.00	10	20	2"	8-1/2"	3-1/2"	21-3/4"	14"	12"	63.93
WD-15	5,292.50	6,877.50	15	30	2"	10-1/2"	3-1/2"	22"	15"	14"	74.07
WD-20	6,474.00	7,203.00	20	40	3"	11-1/2"	3-1/2"	24"	15-3/4"	15"	83.77
WD-25	7,275.50	7,604.50	25	50	3"	12"	4-1/2"	26"	16-1/2"	16-1/2"	95.90
WD-35	8,990.50	10,467.00	35	70	3"	14"	5"	30"	18"	19"	123.46
WD-50	11,904.50	11,483.00	50	100	4"	16"	5-1/2"	32"	22"	21-1/2"	160.94

*-HD Option Requires Minimum 3" Extension

WD-L Series PDI Certified Low-Rough-In Grease Interceptor



Interceptor Model Number	List Price A.R.E.	Flow Rate GPM	Grease Capacity Lbs.	A Inlet & Outlet	B Base to Center	C Top to Center	D Length	E Width	F Height	Weight Lbs.
WD-20-L	\$8,729.00	20	40	3"	7-3/4"	4"	35"	23"	12"	62.10
WD-35-L	11,240.00	35	70	4"	7"	4-1/2"	41"	33"	12"	93.70
WD-50-L	19,041.00	50	100	4"	8-1/2"	5-1/2"	55"	33"	14"	130.70

*Note: WD-50-L Not PDI Certified

Options for WD & WD-L Series:

Suffix	Description	List Price	Suffix	Description	List Price
-AL	Aluminum Cover	\$1,585.50	-O	Inlet & Outlet other than Standard Size	\$609.50
-B	Sediment Bucket	1,829.50	-SS	All Stainless Steel	P.O.A.
-E	Extension Up to 12"	3,967.00	-THD	Threaded Connection	No Add
	Extension over 12" add per inch	279.50			
-FC	Flange & Clamp Device	1,493.00			

Consult factory for all applications outside of listed parameters.
Prices do not include applicable taxes.

